

Background

The Global Warming Alliance Ltd is a not for profit company involved in research into climate change effects in the atmosphere due to global warming. We campaign too with the objective of heightening understanding of future impacts the greenhouse effect is likely to have focussing mainly in the atmospheric science area.



Conference Fees

£55.00 (no VAT necessary)

Venue

The Institute of Physics, 76 Portland Place, London W1B 1NT

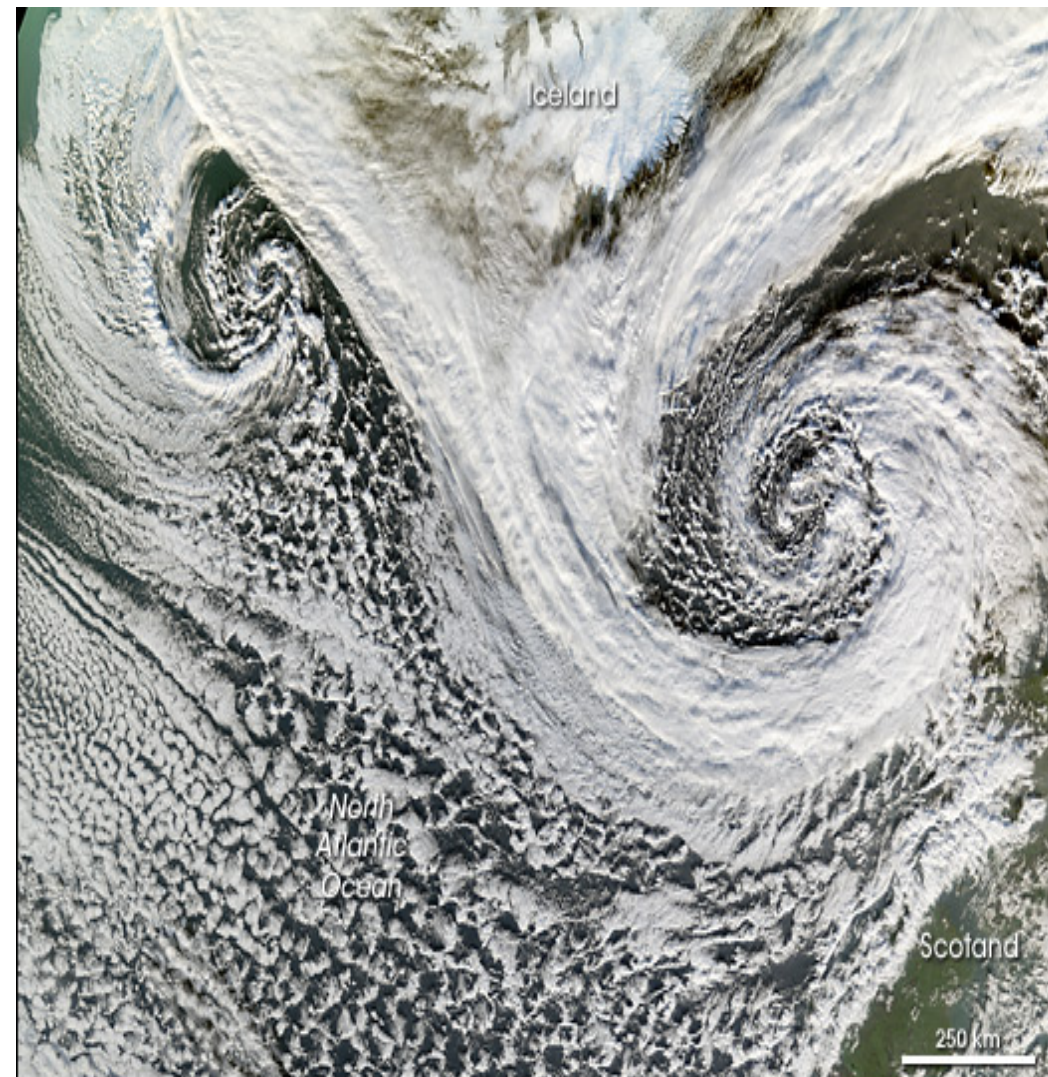
Nearest Mainline Railways Stations:

Euston, King's Cross Paddington

Underground Stations: Great Portland Street Regents Park

Bookings

To book a place or for further information on the event please email info@globalwarmingalliance.com
Or call Louise on 0845 230 2560



Superwinds Plan Ahead Now

Date: 06 June 2008 Venue: Institute of Physics, Portland Place, London W1
0845 230 2560 www.globalwarmingalliance.com Image courtesy of Nasa

SUPERWINDS

Plan Ahead Now

Climate change research by the Global Warming Alliance indicates that deeper depressions are causing winds to intensify across the North Atlantic.

Hurricanes, cyclones and typhoons are given energy by the oceans' heat. As the seas have been incrementally warming due to climate change, the increasing surface layer energy is being transferred on to the atmosphere, which provides conditions for their development. These intense storms are also appearing at much higher latitudes, which will have an effect on us all.

This event will examine the evidence and background to increasing winds due to the intensification of extratropic cyclones because of global warming. It will then focus on the implications for the emergency services and the need for planning now for the changes expected.

Powerful winds are accompanied by storm surge. Will London's present defences be adequate?

Stronger wind forces have both advantages and disadvantages for wind farms and domestic wind turbines, but the net effect can only provide further potential for this area of sustainable energy production, a sector already developing at great speed.

'Ships and aircraft have been designed for less demanding conditions than those we are now seeing around the world.'
Donald Burfitt-Dons, Chairman of the Global Warming Alliance.
Business Intelligence Middle East, 11th March 2008

PROGRAMME

14.00 REGISTRATION

14.10 WELCOME BY THE CHAIR

Ronnie King OBE, O St.J, QFSM, F.I. Fire E,
Vice Chair, National Fire Sprinkler Network,
Chief Fire Officer Mid and West Wales (retired)

14.20 SUPERWINDS: ARRIVING NEAR YOU

Donald Burfitt-Dons, Chairman, GWA
What threat do they pose and why should we be concerned ?

14.50 ALL ABOUT PRESSURES

Frank Barrow, Met Office College
How does isobar spacing translate into wind force at differing latitudes?

15.15 TEA

15.30 HURRICANES HARDLY HAPPEN

Mark Jones, Deputy Chief Fire Officer for Essex,
Chairman CRIF Forest Fire Commission. A serving Fire
And Rescue Chief tells how the emergency services
are preparing for climate change effects.

16.00 THAMES BARRIER: PRESENT CAPABILITY

Office of Chief Engineer, Environment Agency brings
us up to date with our first line of defence.

16.30 WHERE DO WE GO FROM HERE?

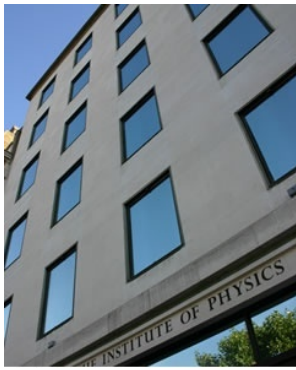
Louise Burfitt-Dons, Campaigning Director, GWA
considers the implications superwinds have for the
general public as well as our national image.

16.45 OPEN FORUM

17.00 DRINKS AND CANAPES ON THE TERRACE

Background

The Global Warming Alliance Ltd is a not for profit company involved in research into climate change effects in the atmosphere due to global warming. We campaign too with the objective of heightening understanding of future impacts the greenhouse effect is likely to have focussing mainly in the atmospheric science area.



Conference Fees

£55.00 (no VAT necessary)

Venue

The Institute of Physics, 76 Portland Place, London W1B 1NT

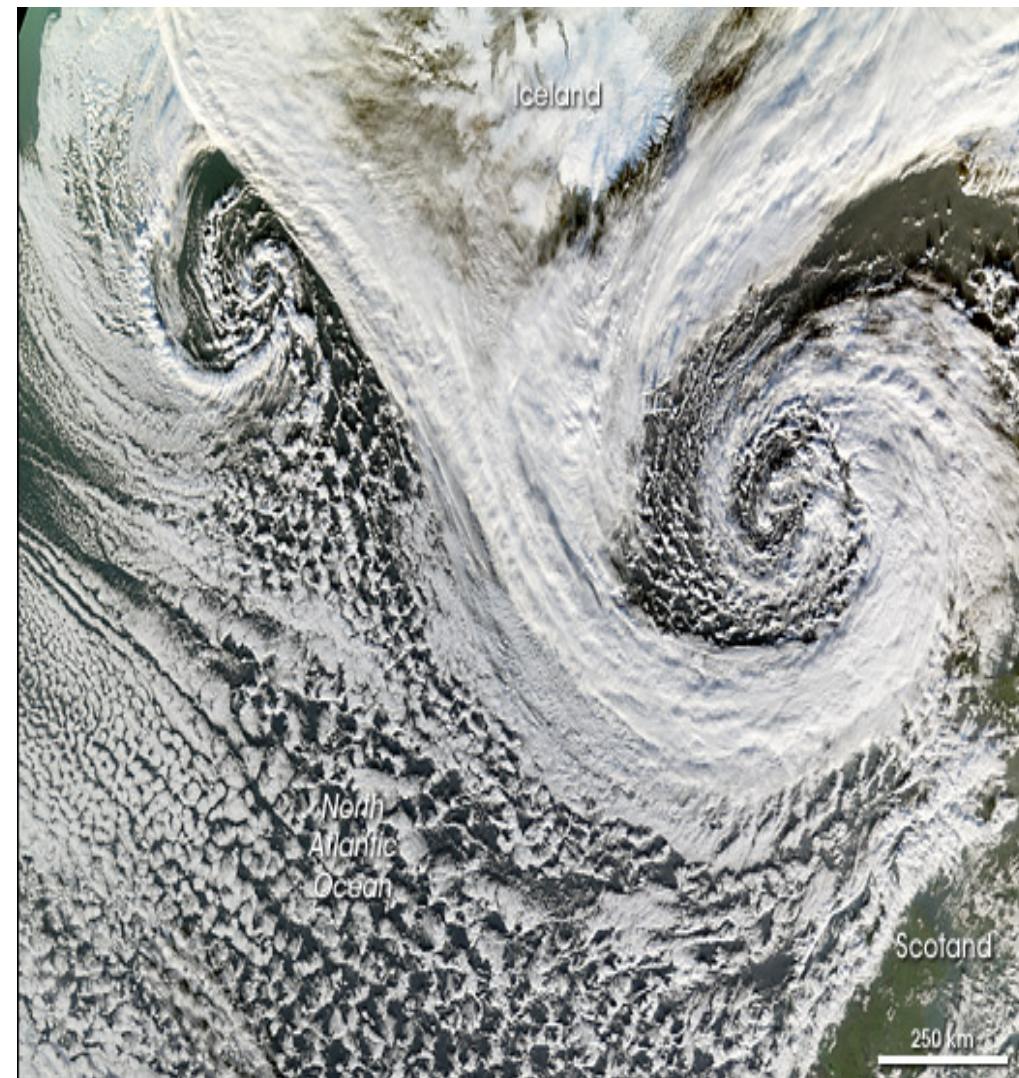
Nearest Mainline Railways Stations:

Euston, King's Cross, Paddington

Underground Stations: Great Portland Street, Regents Park

Bookings

To book a place or for further information on the event please email info@globalwarmingalliance.com
Or call Louise on 0845 230 2560



Superwinds Plan Ahead Now

Date: 06 June 2008 Venue: Institute of Physics, Portland Place, London W1B 1NT
0845 230 2560 www.globalwarmingalliance.com Image courtesy of Nasa

SUPERWINDS

Plan Ahead Now

Climate change research by the Global Warming Alliance indicates that deeper depressions are causing winds to intensify across the North Atlantic.

Hurricanes, cyclones and typhoons are given energy by the oceans' heat. As the seas have been incrementally warming due to climate change, the increasing surface layer energy is being transferred on to the atmosphere, which provides conditions for their development. These intense storms are also appearing at much higher latitudes, which will have an effect on us all.

This event will examine the evidence and background to increasing winds due to the intensification of extratropic cyclones because of global warming. It will then focus on the implications for the emergency services and the need for planning now for the changes expected.

Powerful winds are accompanied by storm surge. Will London's present defences be adequate?

Stronger wind forces have both advantages and disadvantages for wind farms and domestic wind turbines, but the net effect can only provide further potential for this area of sustainable energy production, a sector already developing at great speed.

'Ships and aircraft have been designed for less demanding conditions than those we are now seeing around the world.'
Donald Burfitt-Dons, Chairman of the Global Warming Alliance.
Business Intelligence Middle East, 11th March 2008

PROGRAMME

14.00 REGISTRATION

14.10 WELCOME BY THE CHAIR

Ronnie King OBE, O St.J, QFSM, F.I. Fire E,
Vice Chair, National Fire Sprinkler Network,
Chief Fire Officer Mid and West Wales (retired)

14.20 SUPERWINDS: ARRIVING NEAR YOU

Donald Burfitt-Dons, Chairman, GWA
What threat do they pose and why should we be concerned ?

14.50 ALL ABOUT PRESSURES

Frank Barrow, Met Office College
How does isobar spacing translate into wind force at differing latitudes?

15.15 TEA

15.30 HURRICANES HARDLY HAPPEN

Mark Jones, Deputy Chief Fire Officer for Essex,
Chairman CRIF Forest Fire Commission. A serving Fire
And Rescue Chief tells how the emergency services
are preparing for climate change effects.

16.00 THAMES BARRIER: PRESENT CAPABILITY

Tim Reeder, **BSc, CSci, FCIWEM** Project Scientist for
The Thames 2100 project brings us up to date with
our first line of defence.

16.30 WHERE DO WE GO FROM HERE?

Louise Burfitt-Dons, Campaigning Director, GWA
considers the implications superwinds have for the
general public as well as our national image.

16.45 OPEN FORUM

17.00 DRINKS AND CANAPES ON THE TERRACE